



## WIOA Primary Indicators of Performance: PY 2021-2022 July-September

### Region 15

| Measures                           | PY2020-2021<br>4th Quarter<br>Performance | PY2020-2021<br>% of<br>Performance<br>Goal Met For<br>Q4 | PY2020-2021<br>Performance<br>Goals | PY2021-2022<br>1st Quarter<br>Performance | PY2021-2022<br>% of<br>Performance<br>Goal Met For<br>Q1 | PY2021-2022<br>Performance<br>Goals |
|------------------------------------|---|--|-------------------------------------|---|--|-------------------------------------|
| <b>Adults:</b>                     |   |  |                                     |   |  |                                     |
| Employed 2nd Qtr After Exit        | 77.40                                     | 90.53  | 85.50                               | 77.20                                     | 90.29  | 85.50                               |
| Median Wage 2nd Quarter After Exit | \$10,138                                  | 111.41   | \$9,100                             | \$10,102                                  | 107.47   | \$9,400                             |
| Employed 4th Qtr After Exit        | 75.80                                     | 87.13  | 87.00                               | 85.50                                     | 95.00  | 90.00                               |
| Credential Attainment Rate         | 74.90                                     | 88.12  | 85.00                               | 83.20                                     | 97.88  | 85.00                               |
| Measurable Skill Gains             | 73.60                                     | 122.67   | 60.00                               | 73.90                                     | 123.17   | 60.00                               |
| <b>Dislocated Workers:</b>         |   |  |                                     |   |  |                                     |
| Employed 2nd Qtr After Exit        | 83.00                                     | 97.65  | 85.00                               | 81.80                                     | 96.24  | 85.00                               |
| Median Wage 2nd Quarter After Exit | \$13,599                                  | 144.67   | \$9,400                             | \$13,407                                  | 135.42   | \$9,900                             |
| Employed 4th Qtr After Exit        | 68.90                                     | 79.20  | 87.00                               | 81.40                                     | 91.46  | 89.00                               |
| Credential Attainment Rate         | 85.70                                     | 122.43   | 70.00                               | 88.00                                     | 125.71   | 70.00                               |
| Measurable Skill Gains             | 68.90                                     | 90.07  | 76.50                               | 66.50                                     | 86.93  | 76.50                               |
| <b>Youth:</b>                      |   |  |                                     |   |  |                                     |
| Employed 2nd Qtr After Exit        | 71.40                                     | 90.38  | 79.00                               | 68.10                                     | 83.05  | 82.00                               |
| Median Wage 2nd Quarter After Exit | \$5,898                                   | 125.49   | \$4,700                             | \$5,627                                   | 114.84   | \$4,900                             |
| Employed 4th Qtr After Exit        | 71.20                                     | 85.78  | 83.00                               | 71.20                                     | 83.76  | 85.00                               |
| Credential Attainment Rate         | 45.10                                     | 51.84  | 87.00                               | 66.70                                     | 74.94  | 89.00                               |

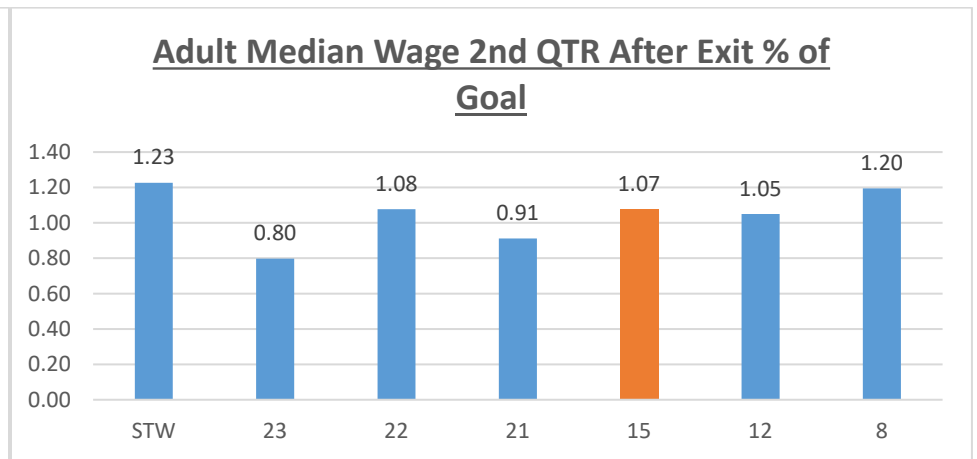
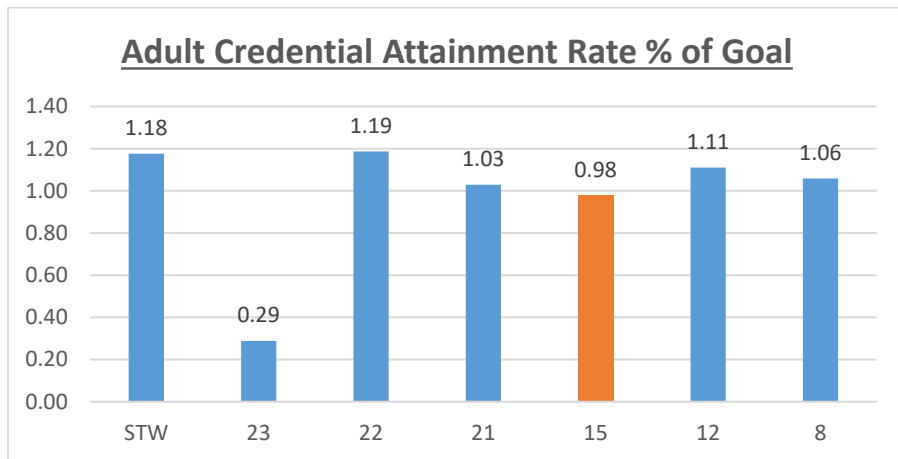
|   |         |        |         |         |        |         |
|---|---------|--------|---------|---------|--------|---------|
| Measurable Skill Gains                            | 14.40   | 28.80  | 50.00   | 17.60   | 32.00  | 55.00   |
| <b>Wagner Peyser:</b>                             |         |        |         |         |        |         |
| Employed 2nd Qtr After Exit                       | 65.80   | 96.48  | 68.20   | 63.50   | 90.71  | 70.00   |
| Median Wage 2nd Quarter After Exit                | \$6,112 | 105.38 | \$5,800 | \$6,169 | 104.56 | \$5,900 |
| Employed 4th Qtr After Exit                       | 65.40   | 99.09  | 66.00   | 65.10   | 95.74  | 68.00   |
| <b>Not Met (less than 90% of negotiated)</b>      |         |        |         |         |        |         |
| <b>Met (90-100% of negotiated)</b>                |         |        |         |         |        |         |
| <b>Exceeded (greater than 100% of negotiated)</b> |         |        |         |         |        |         |

## Statewide

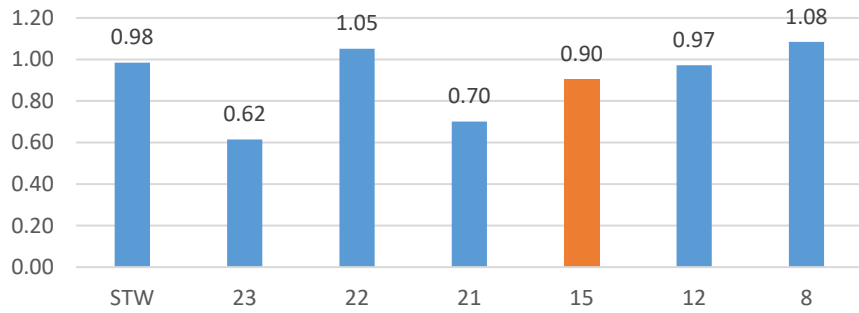
| Measures                           | PY2020-2021<br>4th Quarter<br>Performance | PY2020-2021<br>% of<br>Performance<br>Goal Met For<br>Q4 | PY2020-2021<br>Performance<br>Goals | PY2021-2022<br>1st Quarter<br>Performance | PY2021-2022<br>% of<br>Performance<br>Goal Met For<br>Q1 | PY2021-2022<br>Performance<br>Goals |
|------------------------------------|---|--|-------------------------------------|---|--|-------------------------------------|
| <b>Adults:</b>                     |   |  |                                     |   |  |                                     |
| Employed 2nd Qtr After Exit        | 84.50                                     | 98.83  | 85.50                               | 84.20                                     | 98.48  | 85.50                               |
| Median Wage 2nd Quarter After Exit | \$8,381                                   | 119.73   | \$7,000                             | \$8,586                                   | 122.66   | \$7,000                             |
| Employed 4th Qtr After Exit        | 82.80                                     | 98.57  | 84.00                               | 82.90                                     | 98.11  | 84.50                               |
| Credential Attainment Rate         | 78.50                                     | 115.44   | 68.00                               | 80.00                                     | 117.65   | 68.00                               |
| Measurable Skill Gains             | 80.70                                     | 171.70   | 47.00                               | 73.50                                     | 150.00   | 49.00                               |
| <b>Dislocated Workers:</b>         |   |  |                                     |   |  |                                     |
| Employed 2nd Qtr After Exit        | 83.90                                     | 98.71  | 85.00                               | 83.90                                     | 98.71  | 85.00                               |
| Median Wage 2nd Quarter After Exit | \$10,666                                  | 152.37   | \$7,000                             | \$10,529                                  | 148.30   | \$7,100                             |
| Employed 4th Qtr After Exit        | 76.60                                     | 96.96  | 79.00                               | 77.80                                     | 96.65  | 80.50                               |
| Credential Attainment Rate         | 82.50                                     | 117.86   | 70.00                               | 84.30                                     | 120.43   | 70.00                               |
| Measurable Skill Gains             | 83.20                                     | 177.02   | 47.00                               | 75.80                                     | 154.69   | 49.00                               |

| <b>Youth:</b>                                     |         |        |                |         |        |                |
|---|---------|--------|----------------|---------|--------|----------------|
| Employed 2nd Qtr After Exit                       | 79.50   | 100.63 | <b>79.00</b>   | 79.60   | 100.13 | <b>79.50</b>   |
| Median Wage 2nd Quarter After Exit                | \$3,900 | 121.88 | <b>\$3,200</b> | \$3,900 | 121.88 | <b>\$3,200</b> |
| Employed 4th Qtr After Exit                       | 76.60   | 104.93 | <b>73.00</b>   | 76.30   | 103.11 | <b>74.00</b>   |
| Credential Attainment Rate                        | 80.50   | 105.23 | <b>76.50</b>   | 90.40   | 118.17 | <b>76.50</b>   |
| Measurable Skill Gains                            | 53.00   | 116.48 | <b>45.50</b>   | 55.50   | 119.35 | <b>46.50</b>   |
| <b>Wagner Peyser:</b>                             |         |        |                |         |        |                |
| Employed 2nd Qtr After Exit                       | 62.30   | 95.85  | <b>65.00</b>   | 59.50   | 91.54  | <b>65.00</b>   |
| Median Wage 2nd Quarter After Exit                | \$5,510 | 110.20 | <b>\$5,000</b> | \$5,578 | 109.37 | <b>\$5,100</b> |
| Employed 4th Qtr After Exit                       | 62.20   | 96.88  | <b>64.20</b>   | 60.50   | 94.24  | <b>64.20</b>   |
| <b>Not Met (less than 90% of negotiated)</b>      |         |        |                |         |        |                |
| <b>Met (90-100% of negotiated)</b>                |         |        |                |         |        |                |
| <b>Exceeded (greater than 100% of negotiated)</b> |         |        |                |         |        |                |

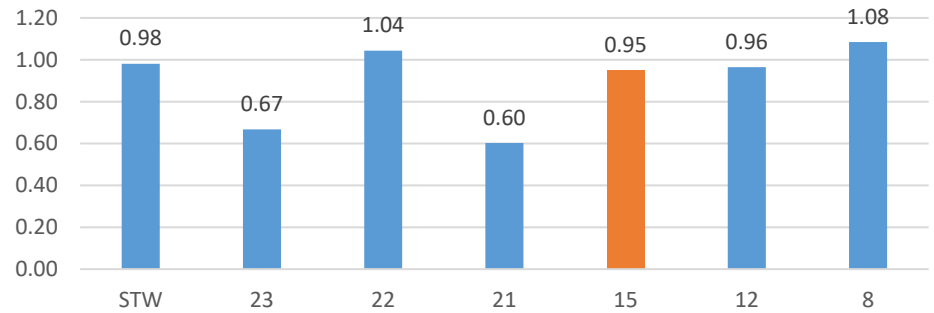
### Regional Comparison



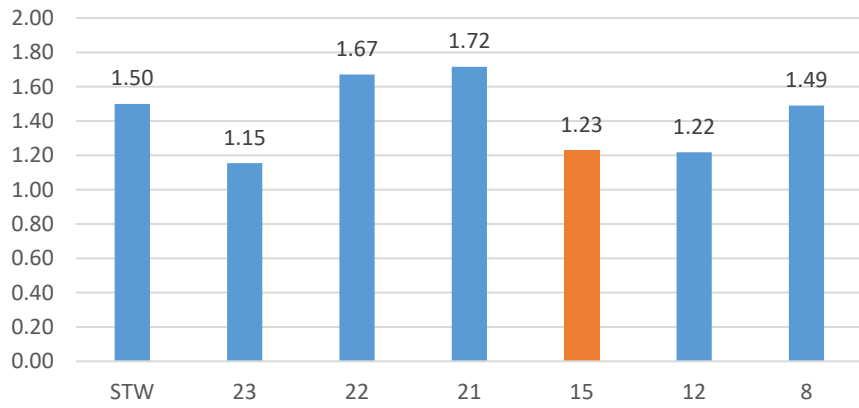
**Adult Employed 2 QTR After Exit % of Goal**



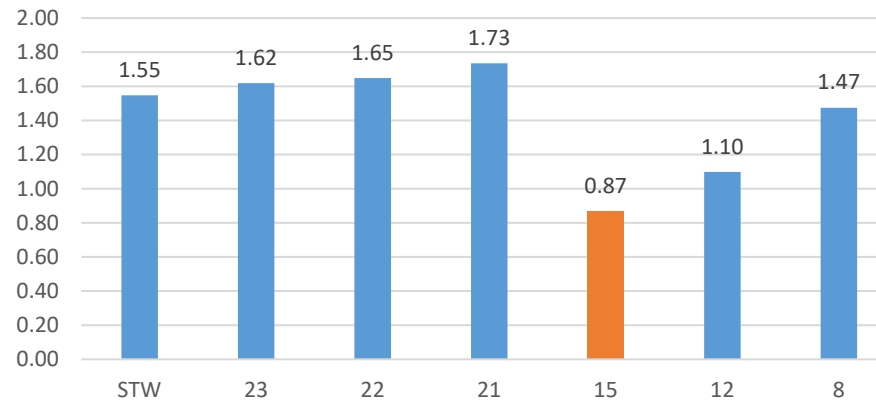
**Adult Employed 4th QTR After Exit % of Goal**



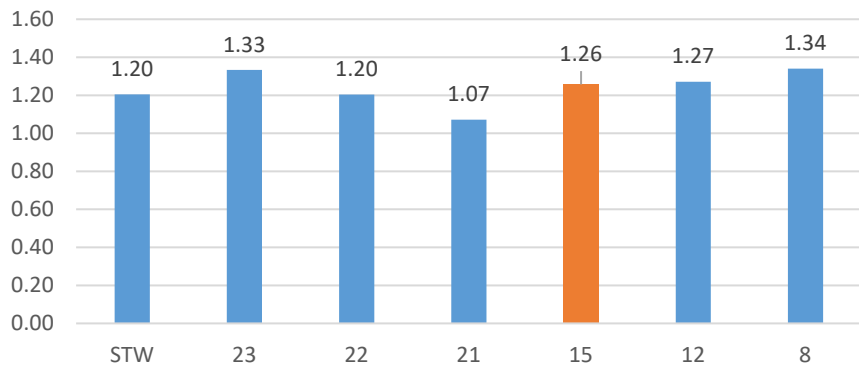
**Adult Measurable Skills Gains**



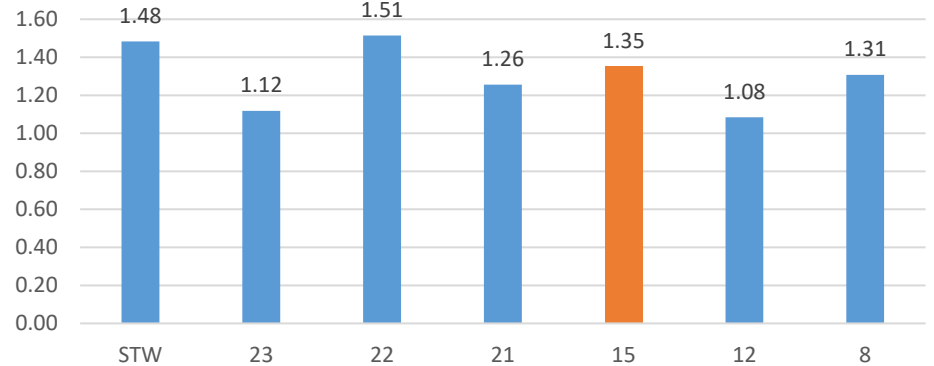
**DW Measurable Skills Gains**



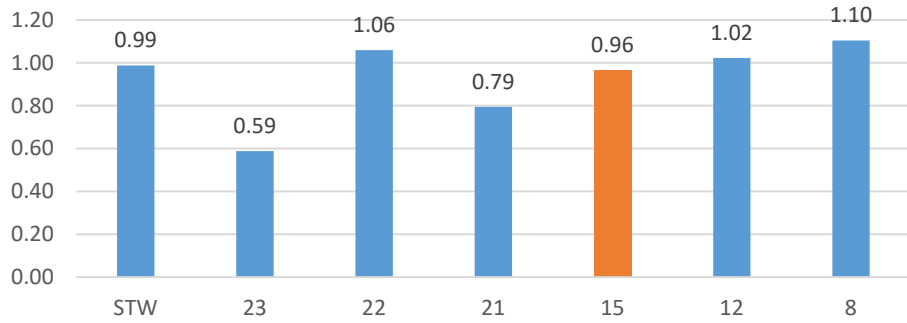
**DW Credential Attainment Rate % of Goal**



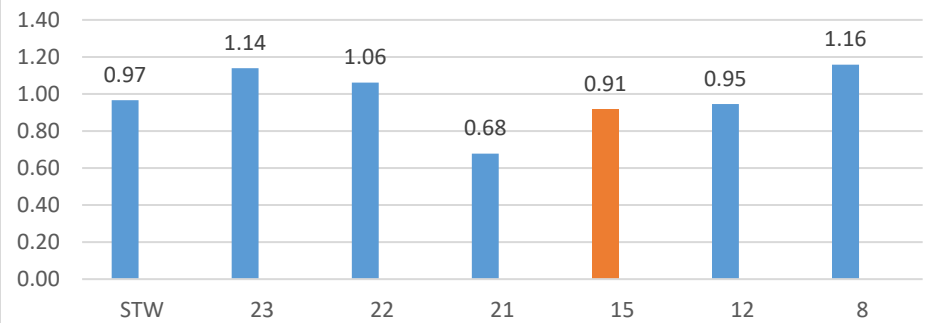
**DW Median Wage 2nd QTR After Exit % of Goal**



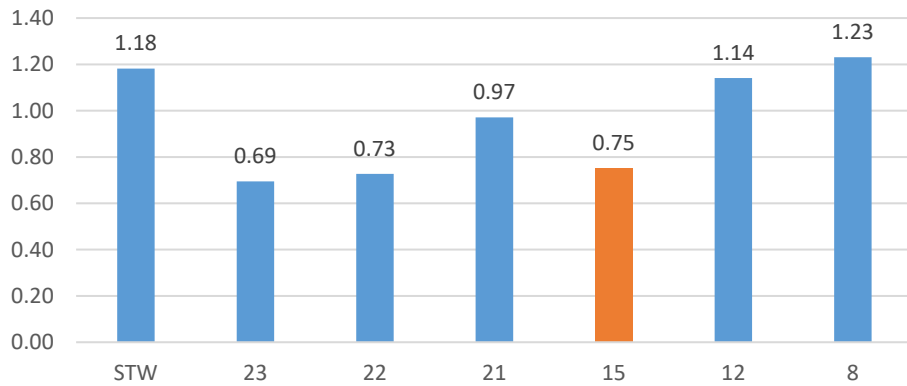
**DW Employed 2nd QTR After Exit % of Goal**



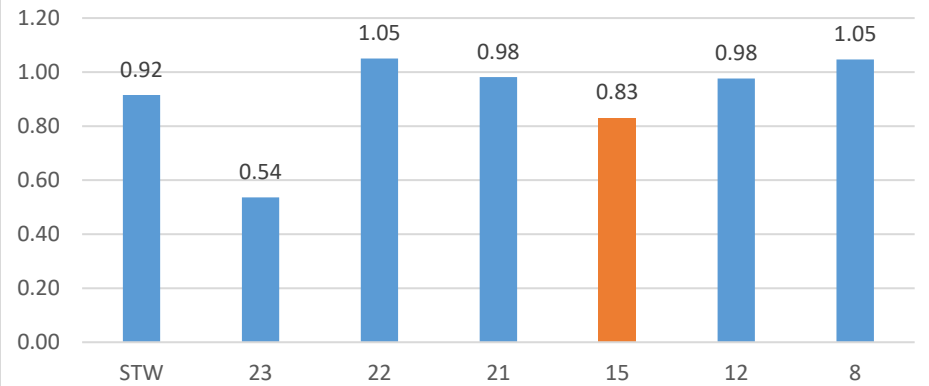
**DW Employed 4th QTR After Exit % of Goal**



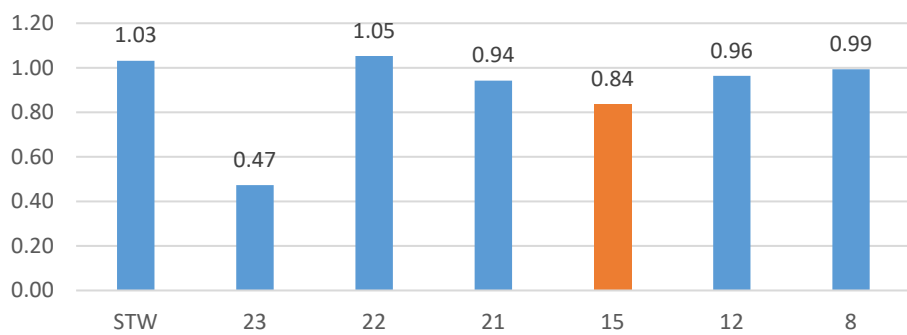
**Youth Credential Attainment % of Goal**



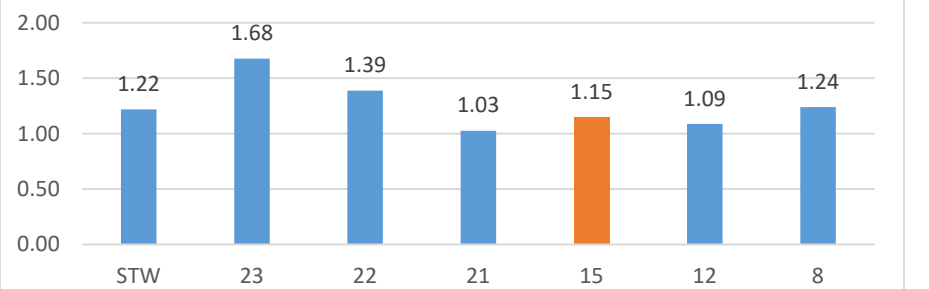
**Youth Employed 2nd QTR After Exit % of Goal**

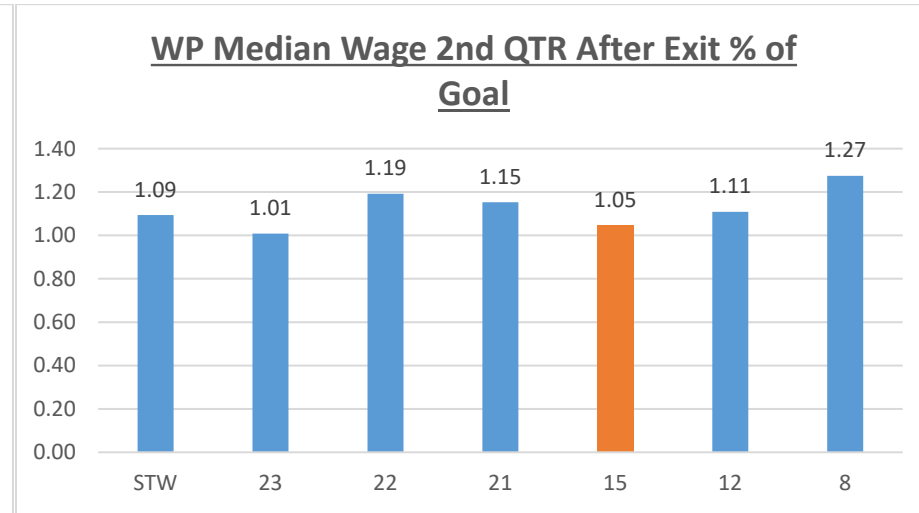
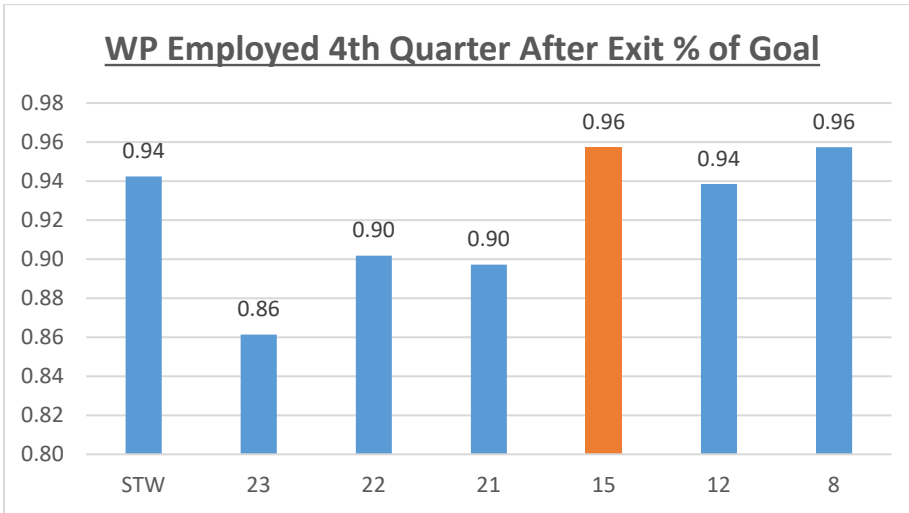
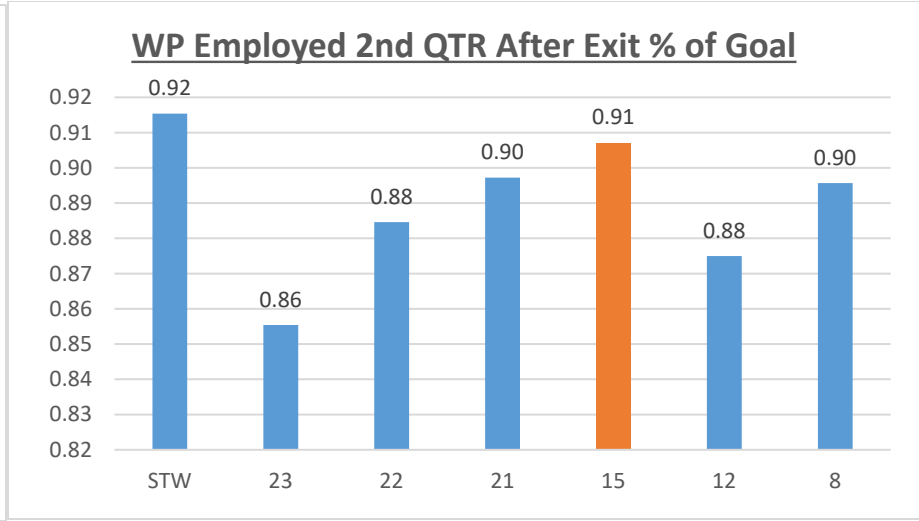
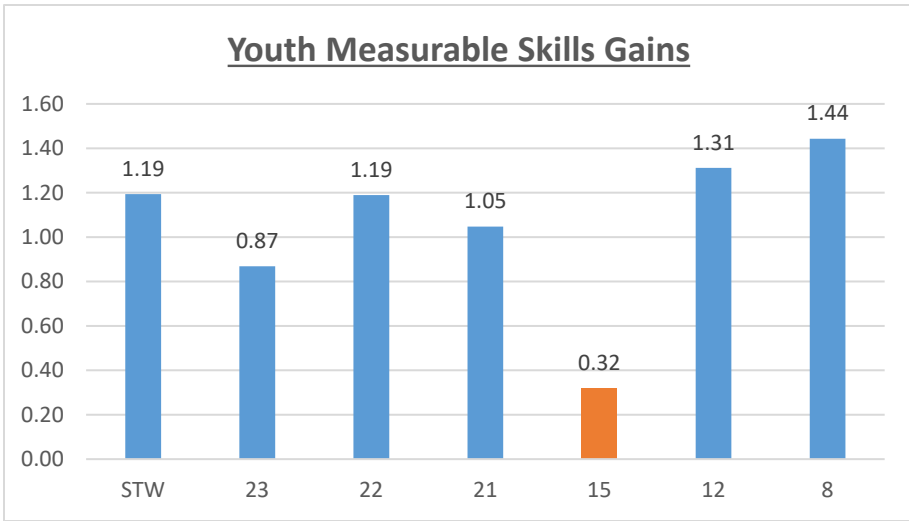


**Youth Employed 4th QTR After Exit % of Goal**



**Youth Median Wage 2nd Quarter After % of Goal**





**Region 8- CareerSource North Florida**

**Region 12 CareerSource Central Florida**

**Region 21- CareerSource Palm Beach**

**Region 22- CareerSource Broward**

**Region 23- CareerSource South Florida**